

NOTES:

- ELEVATION OF THE TOP OF EACH LENGTH OF MARKER PIPE SHALL BE DETERMINED AS SOON AS IT IS INSTALLED AND ALSO IMMEDIATELY BEFORE THE NEXT LENGTH OF MARKER PIPE IS ADDED.
- SETTLEMENT PLATE LOCATIONS SHALL BE FLAGGED AND PROTECTED FROM CONSTRUCTION VEHICLES AND EQUIPMENT. IF SETTLEMENT PLATES ARE DISTURBED, THEY SHALL BE REPLACED IN KIND.
- OAKUM USED TO CONSTRUCT SEAL SHOULD NOT HAVE A MESH COVERING (PLASTIC OR OTHER SYNTHETIC MATERIAL).

PLACEMENT:

INSTALL SETTLEMENT PLATES AT APPROXIMATELY 150 FEET SPACING WITHIN THE FOLLOWING AREAS:

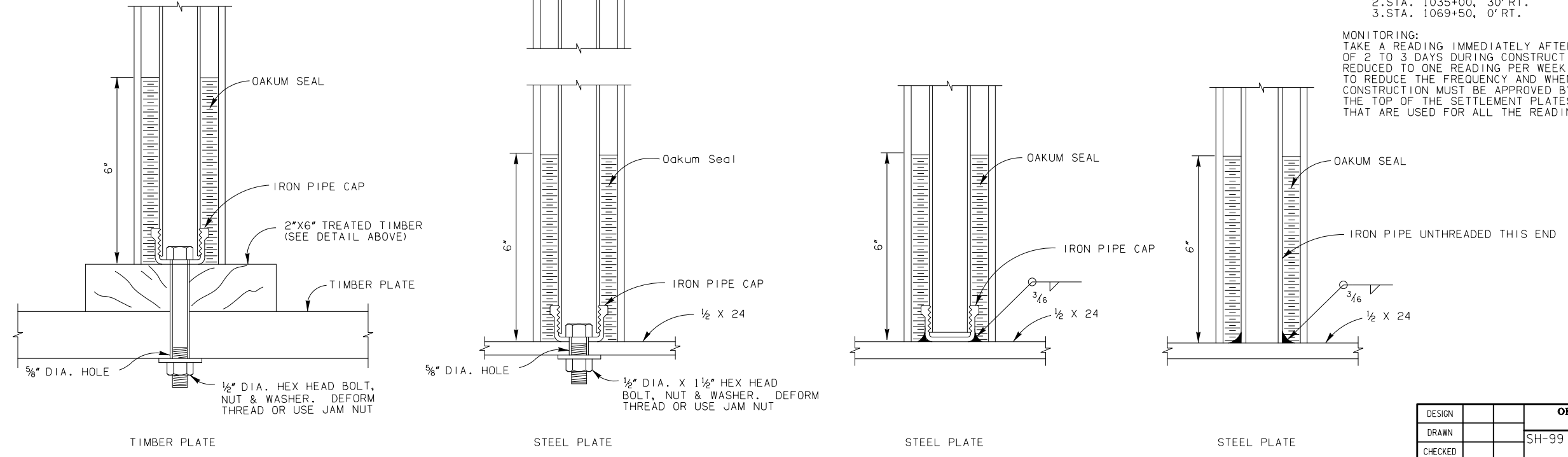
- SPECIAL EMBANKMENT AREA #1 (STA. 1029+00 TO STA. 1037+50)
- SPECIAL EMBANKMENT AREA #2 (STA. 1068+00 TO STA. 1073+00)

INSTALL A VIBRATING WIRE PIEZOMETER APPROXIMATELY AT THESE LOCATIONS:

- STA. 1034+00, 30' RT.
- STA. 1035+00, 30' RT.
- STA. 1069+50, 0' RT.

MONITORING:

TAKE A READING IMMEDIATELY AFTER INSTALLATION AND AT A FREQUENCY OF 2 TO 3 DAYS DURING CONSTRUCTION OPERATIONS. THE READING MAY BE REDUCED TO ONE READING PER WEEK BASED ON THE DATA. THE DECISION TO REDUCE THE FREQUENCY AND WHEN TO BEING THE NEXT PHASE OF CONSTRUCTION MUST BE APPROVED BY THE ENGINEER. THE ELEVATIONS OF THE TOP OF THE SETTLEMENT PLATES MUST BE SURVEYED TO FIXED BENCHMARKS THAT ARE USED FOR ALL THE READINGS.



STEM AND PLATE OPTIONS

DESIGN		OKLAHOMA DEPARTMENT OF TRANSPORTATION	
DRAWN		DESIGN DIVISION	
CHECKED		SH-99 OVER BIRCH CREEK	OSAGE COUNTY
APPROVED		SETTLEMENT PLATE DETAIL	
SQUAD		STATE JOB NO. 24261(04)	SHEET NO. 68

DSWR: XXX PLOTTED BY: jaydes@okdot.gov 6/9/2017 10:54:44 AM
 6:1200\001\001\001\001-C-Settlement Plate Detail.dgn